

PIPE CLIP

(ABSG004 - 25/27mm)

Aspirating smoke detection pipe clip, Designed to support both 25mm and 27mm aspirating detection smoke pipe. The clip has a flexible side wall which allows the clip to open wide enough to allow the pipe to be place within its circular cavity. The clip secures the pipe when closed. The clip can be reopened by using a flat edged tool to wedge open the top of the clip which release the pipe.

Please note that more the clip is opened and closed, slight discoloration may appear on the side wall

Installation Instructions:

For use to fix to any flat surface (Wall, Ceiling, Floor etc.)

Do not install in direct sunlight.

Pipe clips are required every 800mm along the length of pipe.

Only install with approved fittings and EN54-20 ABS Pipe.

Do not use solvents to clean, only soapy water.

When ambient temperatures are outside 15°C-25°C use pipe expantion joints.

Part No.

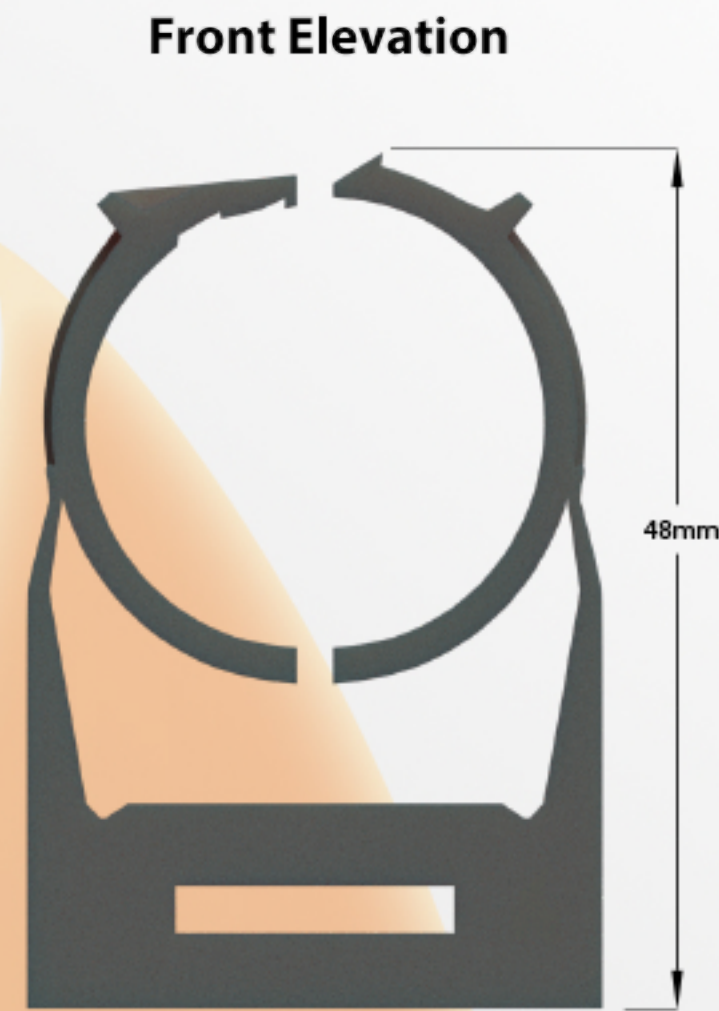
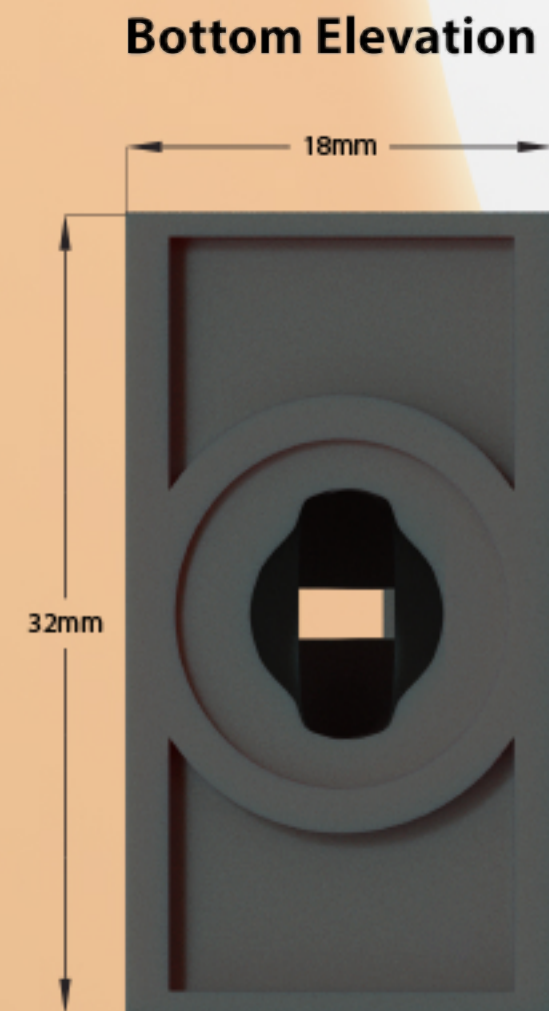
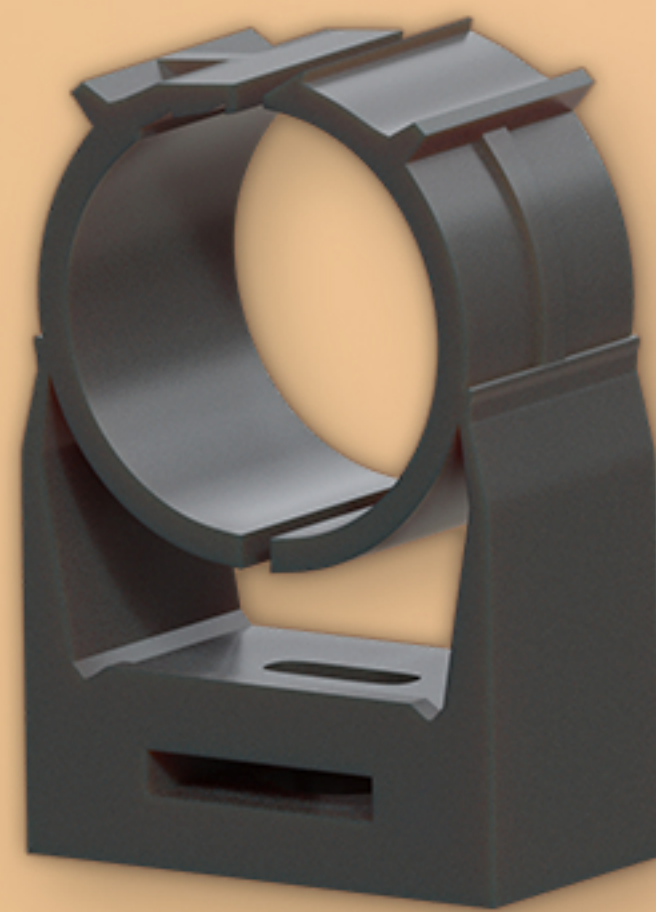
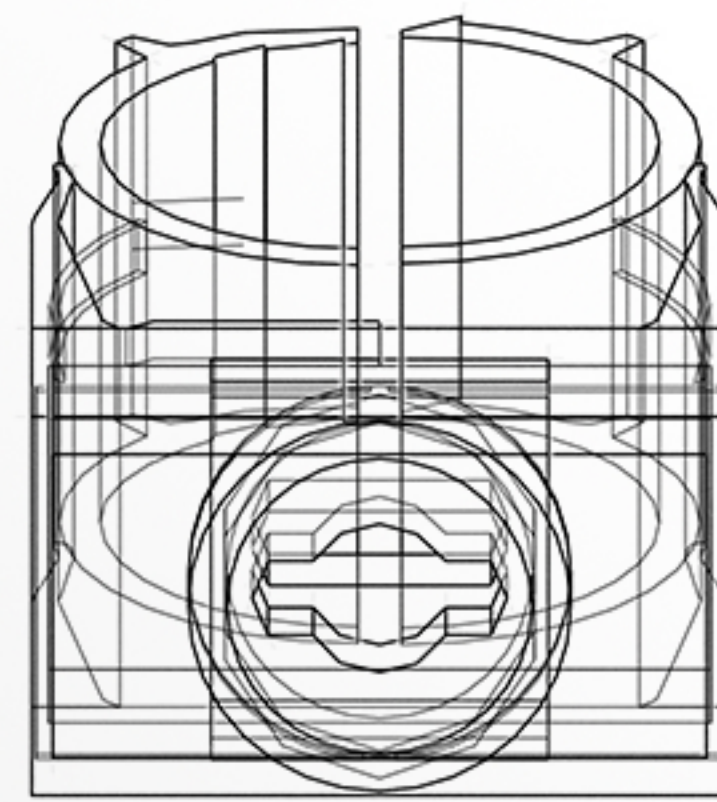
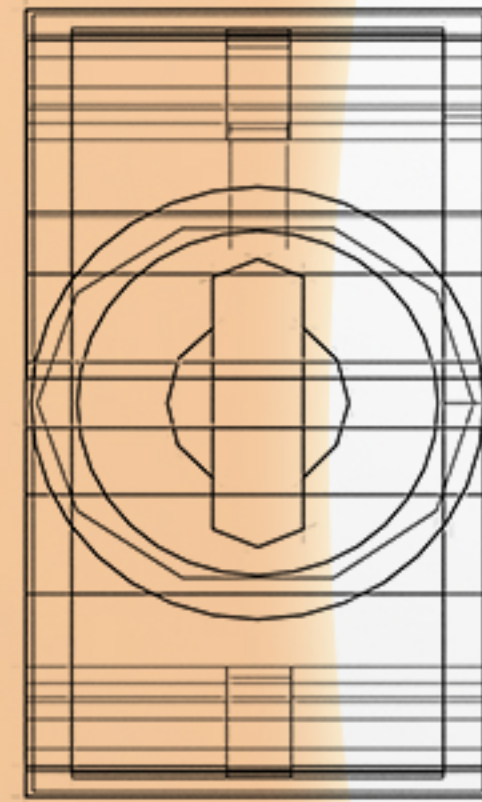
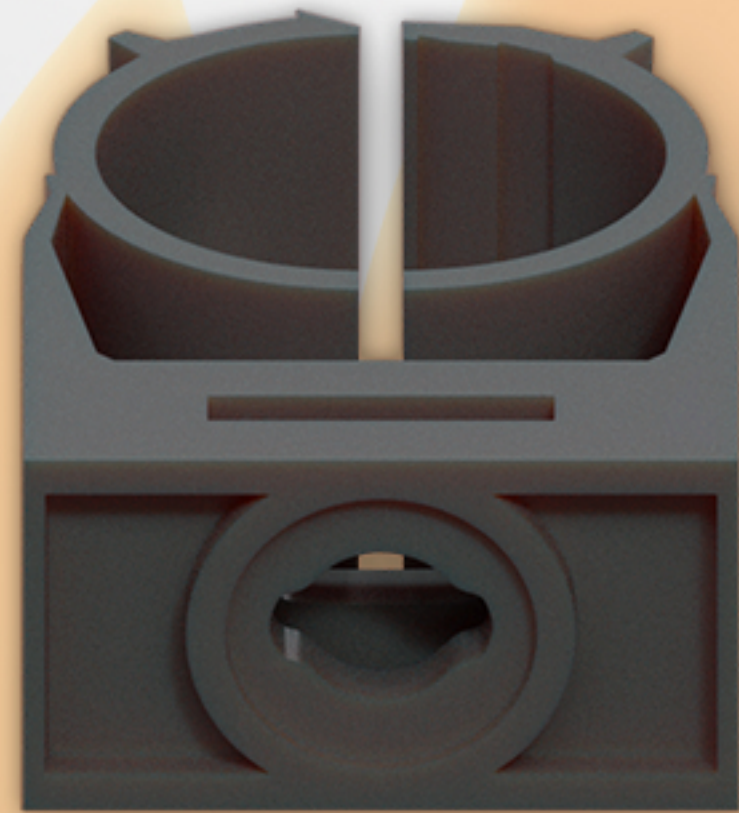
Fitting Colour

Diameter Tolerance

ABSG004

GREY

+/- 0.15mm



RAW MATERIAL DATA
Polypropylene Tatren IM 55 80
MFR (230°C/2.16kg)
Test Method: ISO 1133-1
Unit: g/10 min
Typical Value: 55
Tensile Stress at Yield*
Test Method: ISO 527-1,2
Unit: MPa
Typical Value: 23
Tensile Strain at Yield*
Test Method: ISO 527-1,2
Unit: %
Typical Value: 4
Modulus of Elasticity in Tension*
Test Method: ISO 527-1,2
Unit: MPa
Typical Value: 1500
Flexural Modulus*
Test Method: ISO 178
Unit: MPa
Typical Value: 1450
Izod Impact Strength Notched, 23°C*
Test Method: ISO 180/A
Unit: kJ/m²
Typical Value: 7
Izod Impact Strength Notched, -20°C*
Test Method: ISO 180/A
Unit: kJ/m²
Typical Value: 4
HDT 0.45 MPa*
Test Method: ISO 75-1,2
Unit: °C
Typical Value: 105
Rockwell Hardness*
Test Method: ISO 2039/2
Unit: R Scale
Typical Value: 82

Typical properties, not to be used as specification.

* Average mechanical property values of several measurements carried out on standard injection-moulded test specimens prepared in accordance with ISO 1873-2.